

PARENT INFORMATION BULLETIN



Message from Head Teacher

Matilda

I warmly invite you to attend our school production of 'Matilda' on either Wednesday 8 July or Thursday 9 July, 7pm at the upper site, Holly Walk. The performances will showcase the hard work, creativity and dedication of our students and promise to be a wonderful celebration of their talent and of the wider enrichment opportunities within the school community.

I would be delighted to have you join me to celebrate their achievements.

Have a good weekend.

Ms Gumbrell

Tickets are on sale now.



Contents:

- [Calendar of upcoming events](#)
- [Useful Links](#)
- [General Notices](#)
- [Previous Notices](#)

[Calendar of Upcoming Events](#)

Week A

- Monday 15- Year 11 celebration assembly
- Tuesday 16 - Year 11 Prom at Forty Hall
- Wednesday 17 - Year 8 HPV vaccinations
- Thursday 18 - Students leave at 2.20pm



Useful Links

Vacancies and Opportunities at ECSfG - [Click Here](#)

Useful Websites for Students - [Click Here](#)

Student SEND - [Click Here](#)

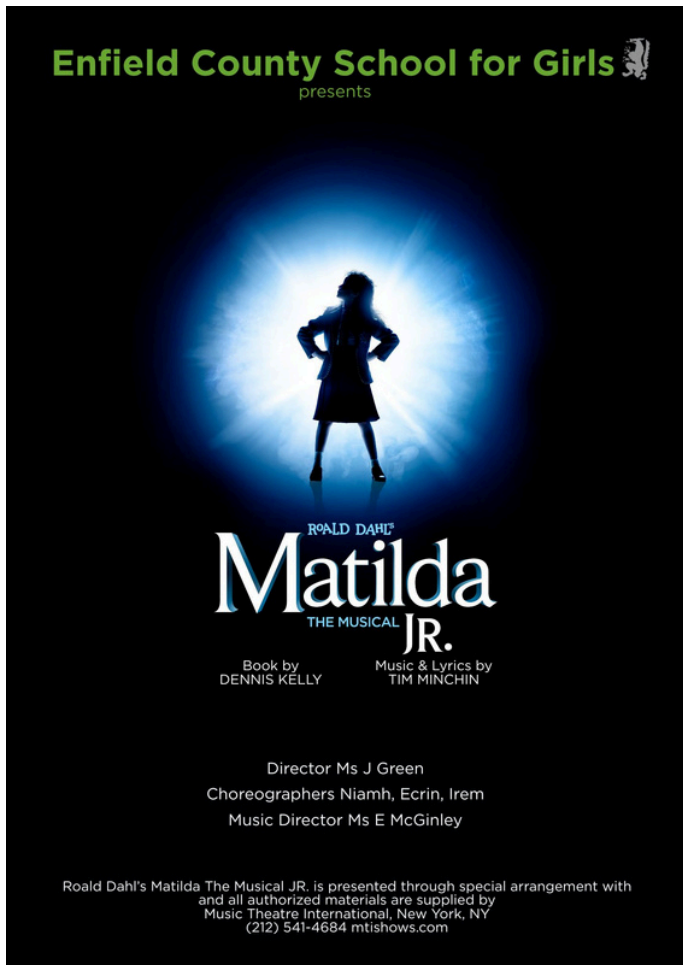
Wellbeing and Safeguarding Signposting for Young People - [Click Here](#)

General Notices

Matilda Production and Arts Exhibition

A little rebellion comes to ECSfG!

We warmly invite you to join us for an evening of visual arts at Holly Walk (upper site) hall on Weds 8 and Thurs 9 July. Tickets are on sale now. Doors open at 6:30pm, when refreshments will be available to purchase to enjoy our visual art exhibition. Our Matilda performance begins at 7pm. We look forward to enjoying the evening with you.



Use QR Code or

Click here to buy tickets: Wednesday 8 July.

(night one cast).



Use QR Code or

Click here to buy tickets: Thursday 9 July.

(night two cast).



Previous Notices

Term dates - 2026-2027

Term dates for next academic year are:

Autumn Term 2026	
	Wednesday 2 September Staff Induction
	Thursday 3 September Induction for new Year 7 & 12 students only
	Friday 4 September Induction for new Year 7 & 12 students only
INSET DAY	Wednesday 21 October School closed for all staff and students
INSET DAY	Thursday 22 October School closed for all staff and students
INSET DAY	Friday 23 October School closed for all staff and students
HALF TERM	Monday 26 October - Friday 30 October
LAST DAY OF TERM	Friday 18 December
Spring Term 2027	
FIRST DAY OF TERM	Monday 4 January
HALF TERM	Monday 15 February - Friday 19 February
INSET DAY	Monday 22 February School closed for all staff and students
LAST DAY OF TERM	Thursday 25 March
Summer Term 2027	
FIRST DAY OF TERM	Monday 12 April
MAY BANK HOLIDAY	Monday 3 May School closed for all staff and students
INSET DAY	Tuesday 4 May School closed for all staff and students
HALF TERM	Monday 31 May - Friday 4 June
LAST DAY OF TERM	Thursday 22 July



Previous Notices

Year 8 end of year trip to Cineworld Friday 10th July 2026

We are very excited to invite all students in Year 8 to Cineworld to watch Moana, on Friday 10th of July 2026.

This is a reward trip to celebrate their good behaviour and progress so far in Year 8.

We will leave the lower site at 11:00am on Friday 10th of July. We will walk to Cineworld on Southbury Road, Enfield, taking advantage of the local cinema, which will not incur any travel costs.

The film starts at 12:00pm and the viewing will last approximately 2.00 hours. Students will make their own way home from the venue.

·This trip is £5 non-refundable, and is payable via ParentPay. Please visit www.parentpay.com and select 'Year 8 Cineworld' to make payment and give your consent by Monday 22th June 2026 in order to confirm your daughter's place on the trip.

Students must bring a packed lunch and a drink with them; any students entitled to free school meals will have a packed lunch provided for them on the day. Students will also able to buy food in the cinema. This is not included in the cost of this trip.

Students can wear their own clothes on that day if attending the trip.





Previous Notices

KS3 End of Year Assessments

Exam	Date	Time
Year 8 Maths Paper 1 (Non Calculator)	Monday 15 June	9:00am–10:00am
Year 7 Maths Paper 1 (Non Calculator)	Monday 15 June	10:30am–11:30am
Year 9 Maths Paper 1 (Non Calculator)	Monday 15 June	1:30pm–2:30pm
Year 7 Maths Paper 2 (Calculator)	Tuesday 16 June	10:30am–11:30am
Year 8 Maths Paper 2 (Calculator)	Wednesday 17 June	9:00am–10:00am
Year 9 Science	Wednesday 17 June	1:30pm–2:30pm
Year 9 Maths Paper 2 (Calculator)	Thursday 18 June	9:00am–10:00am
Year 9 English	Friday 19 June	10:30am–12:00pm

Students in Years 7, 8 and 9 will be completing their KS3 end of year assessments between Monday 15 June and Friday 19 June 2026. For the second year running, students in Years 7 and 8 will sit their Maths assessments in the Rosemary Avenue exam hall. Year 9 students will sit assessments in Maths, English and Science.

The purpose of these assessments is to give students valuable experience of working in exam hall conditions and to help prepare them for future formal assessments. The results will also provide useful attainment data, which will help inform students’ Summer Term Reports. A list of topics that could be tested will be shared with students on MS Teams so that they can prepare and revise. If you have any questions, please contact Mr Creasey via ecsgeneral@enfieldcs.enfield.sch.uk

Enfield Music Service

If you are interested in taking up voice or instrumental lessons in the Autumn term (next academic year) with Enfield Music Service, your parents/carers are now able to renew and book music lessons and activities for Autumn 2026 from the Music Store:

<https://traded.enfield.gov.uk/musicstore>

You can also find out more about the cost of the lessons and whether you are eligible for some support with the fees via the same link. The deadline for bookings is Monday 29th June. Please see Ms McGinley or Ms Ojokor if you have any questions about booking lessons.



Previous Notices

Yondr pouches

Parents of year 11 students have received a letter this week regarding the fact that they no longer need to use their Yondr pouches during the exam season. If any year 11 student would like to donate their Yondr pouch to a student in need of one in years 7-10 please hand them in to Ms Obuz or Ms Smith.

House Charities

As you know each House at Enfield County School for Girls supports a charity on their House days. We now feel it is the time to give our students the opportunity to support some different charities over the course of the next two years. We would like to support local charities in Enfield and across London.

Students will be asked to complete an msform with their suggestions and we will then have a vote amongst staff and students.

If any parent or carer is involved in a local charity and would like to nominate it as a house charity or knows of a charity that they think would be a good cause then also complete the msform [here](#).

Deadline for nominations is Friday 3rd July.





SPORTS DAY
LEE VALLEY
25 JUNE
» 2026 «

I RUN LIKE A GIRL.
 IF YOU RUN A LITTLE FASTER
 YOU COULD TOO.

ATHLETICS
CLUB

WEDNESDAY

ALL YEARS UNTIL
4.15PM

••
 ••

ROUNDERS
CLUB

MONDAY
AFTER
SCHOOL
UNTIL 4.15PM
ALL YEARS